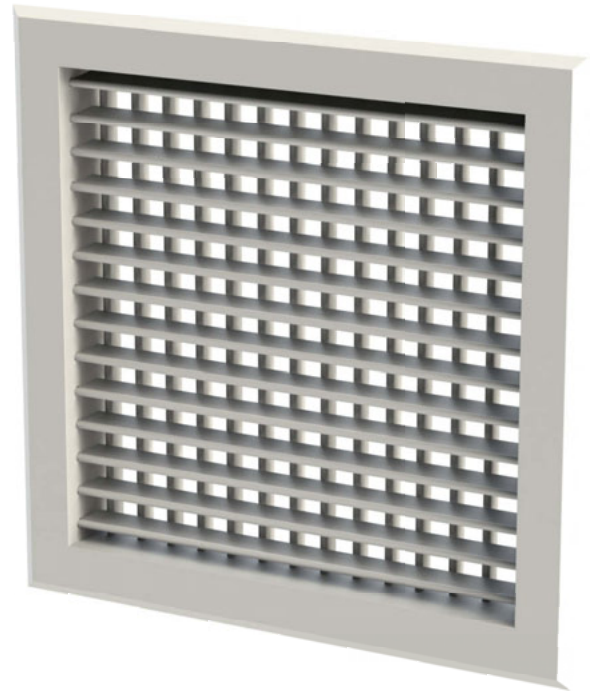


Double Deflection Grilles

With two banks of individually adjustable blades, Series DD double deflection grilles allow further control over throw than Series SD single deflections.

Blades are secured with high tensile spring wire, which provides enough force to keep them in their assigned position, while also allowing easy manual adjustment.

The maximum free area of 80% is identical to that of single deflection grilles, however noise generation and pressure drops are slightly higher, making Series DD double deflection grilles more suitable for supply applications.

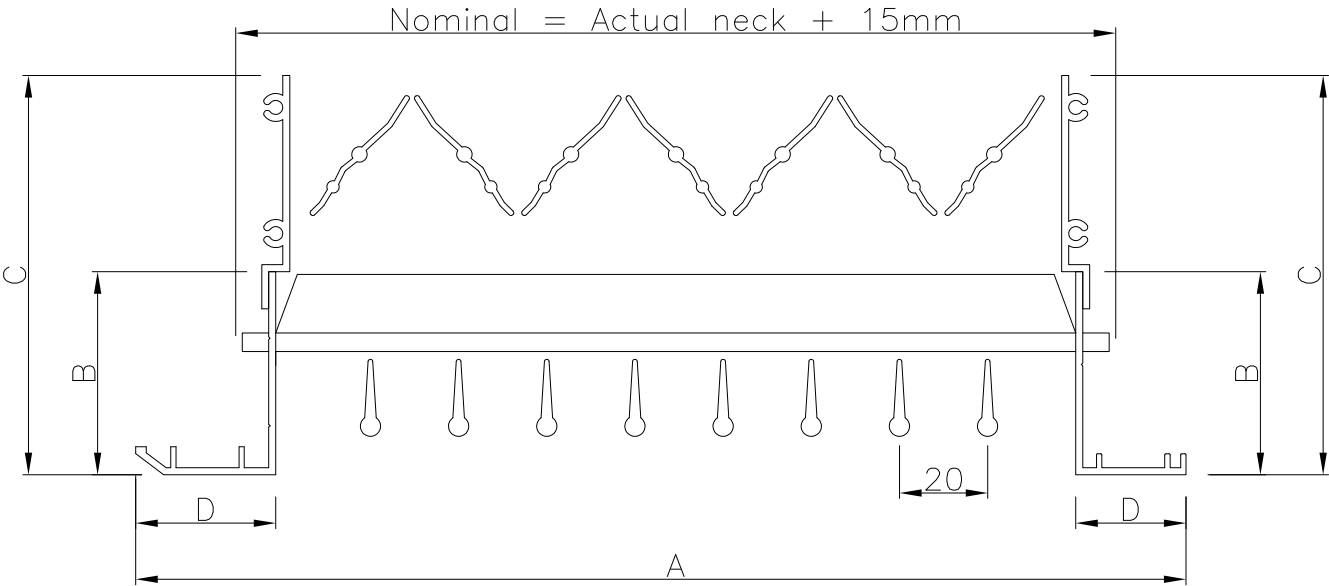


Design features

Material	Extruded aluminium frame and blades High tensile steel wire
Frame	Standard: 32BD - 32mm bevelled large Optional: 25F - 25mm flat
Sizes	Minimum: 100mm x 50mm Maximum: 2900mm x 2900mm Maximum blade length is 570mm, above this mullions will be used Unless requested, the front set of blades will run horizontally, with the rear set running vertically
Fixings	Standard: None Optional: See page 11
Finish	Standard: Satin anodised (AA5) Optional: See page 8
Mass/m² face area	14.5kg 22.5kg including opposed blade damper
Free area	Approx 80% maximum

Technical drawings

Standard



32BD: 32mm bevelled large	
A	Nominal + 45mm
B	46mm
C	90mm
D	32mm

25F: 25mm flat	
A	Nominal + 30mm
B	46mm
C	90mm
D	25mm

Please note: Blade pins stick out approximately 6mm from the grille neck each side.