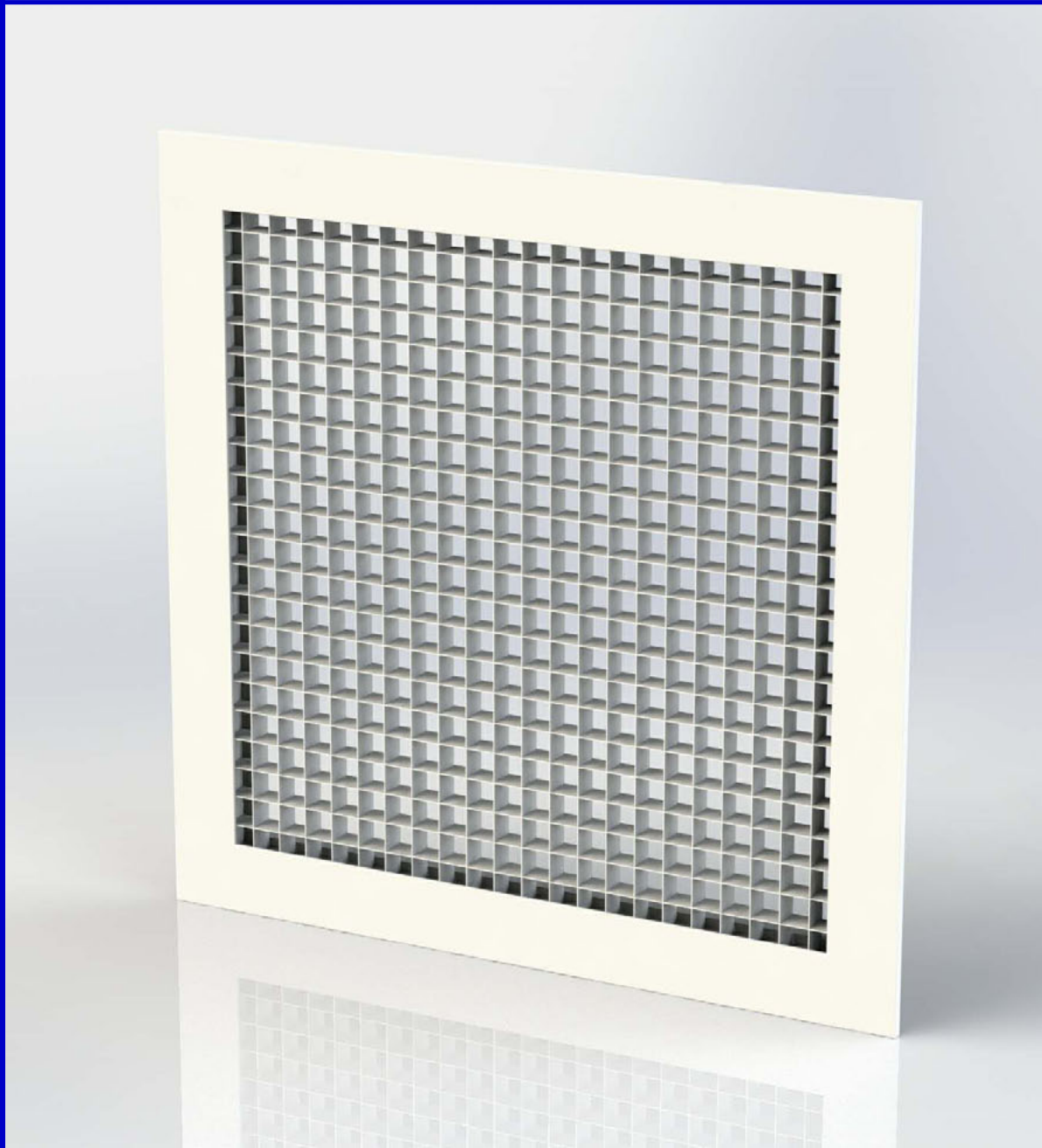


- Industry standard extract grille
- Standard 0° core or optional 45°
- High performance with minimum pressure drops and noise generation
- Hinged and removable cores
- Popular sizes held in stock for immediate despatch



Series ECG/ECG45

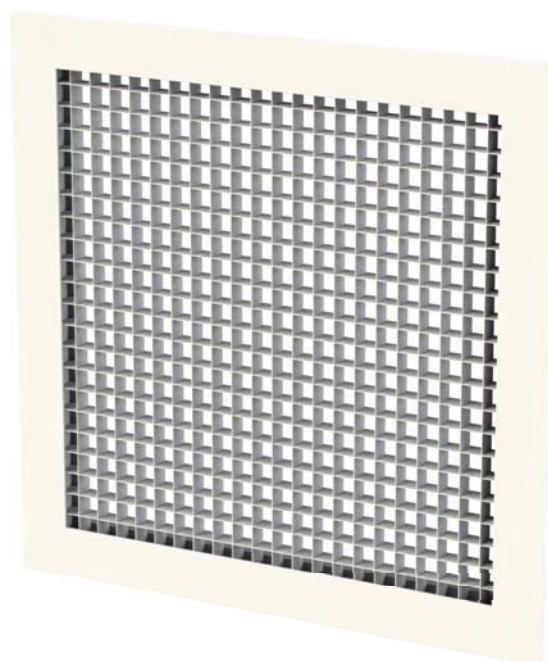
Series ECG egg crate grilles are the industry standard extract grille.

Comprising a core with over 90% free area with vanes parallel to airflow, egg crate grilles are capable of handling huge air volumes with minimal noise generation or pressure drop. Ideal for areas requiring high changeover rates like restaurant kitchens, painting booths etc.

A 45° core is also available, with a similar high free area, but introducing non vision properties from certain angles, or giving an angled throw if used for supply.

We hold large quantities of popular sizes of ECG in stock, giving us the capability to supply even the largest orders on a next day basis.

For non standard sizes, units are manufactured to order.

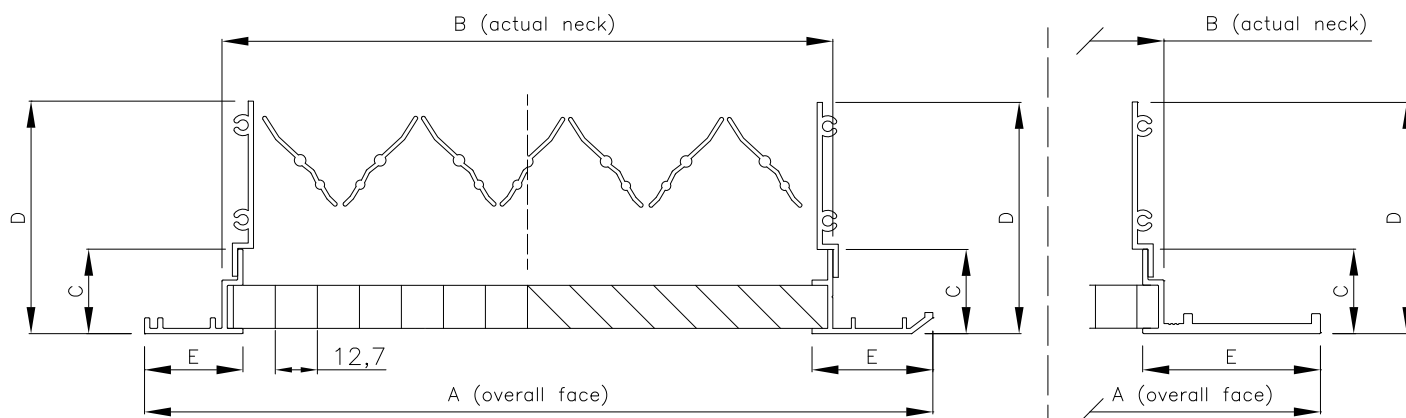


Design features

Material	Aluminium frame and core
Frame	Standard: 30FE - 30mm flat Optional: 37BE - 37mm bevelled 50FE - 50mm flat
Sizes	Minimum: 100mm x 50mm Maximum: 2900mm x 2900mm Maximum core size is 1300mm x 1300mm, above this mullions will be used
Fixings	Standard: None
Finish	Standard: Satin anodised (AA5) frame (not with 50FE), mill aluminium core Stock units are powder coated RAL9010
Mass/m² face area	4 kg 12 kg including opposed blade damper
Free area	Approx 90%

Technical drawings

Standard



30FE: 30mm flat (standard)	
A	Nominal + 40mm
B	Nominal - 7mm
C	25mm
D	70mm
E	30mm

37BE: 37mm bevelled (optional)	
A	Nominal + 45mm
B	Nominal - 15mm
C	25mm
D	70mm
E	37mm

50FE: 50mm flat (optional)	
A	Nominal + 80mm
B	Nominal - 15mm
C	25mm
D	70mm
E	54mm

Please note: If a tile replacer size is required, for example 595mm x 595mm or 1195mm x 595mm, a 30FE 30mm flat frame should be specified.