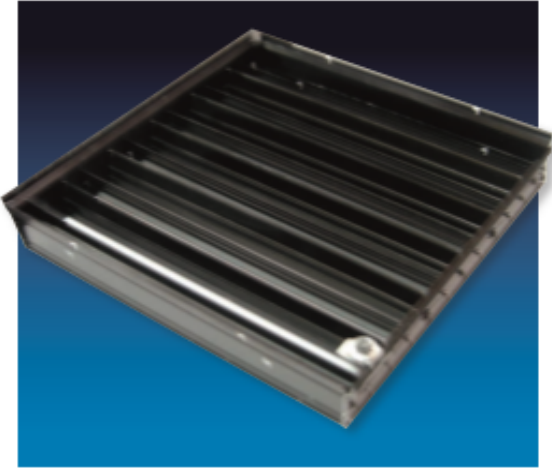


ducting express

OPPOSED BLADE DAMPERS



Polyaire Model OBD Opposed Blade Dampers are commonly used as a volume control device in supply, return and exhaust air systems.

Opposed Blade dampers are mounted directly behind the supply, return or exhaust air grille and provide the ability to be manually adjusted through the face of the Diffuser, Grille or Register.

Construction is from either Aluminium or Steel with a matt black finish. Model OBD Opposed Blade Dampers are available in stock sizes and can also be manufactured to order in a wide range of sizes.

MODEL OBD - Stock Sizes Available	
ITEM #	SIZE mm (W x H)
248006IE	100 x 100
248006	150 x 150
248006E	200 x 200
248007	225 x 225
248007E	250 x 250
248008	300 x 300
248009	375 x 375
248010E	400 x 400
248010	450 x 450
248011E	500 x 500
248012E	547 x 547
248012	600 x 600

