

# TICO S/PA

## DESCRIPTION

Tico S is a high performance machinery mounting material. It matches today's fast changing manufacturing environment, where ease of machine mounting and flexibility of plant layout are prime factors.

Tico S is manufactured from a blend of carefully selected cork particles and polychloroprene/acrylonitrile elastomers.

## TYPICAL PROPERTIES

<b>Tensile Strength</b>	2.1 MN/m <sup>2</sup>	Tested in accordance with BS 903
<b>Elongation at Break</b>	50%	
<b>Hardness</b>	69 + 5 <sup>0</sup>	IRHD
<b>Thermal Conductivity</b>	0.1 0.7	W/m <sup>0</sup> C Btu x in/ft <sup>2</sup> x h x <sup>0</sup> F
<b>Damping Factor</b>	0.1	
<b>Co-efficient of Friction</b>	0.65 0.5	TICO to concrete TICO to bright mild steel
<b>Temperature Range</b>	-40° to +100° C	TICO S will operate satisfactorily over the indicated range and is suitable for both arctic and tropical climates
<b>Maximum Load-bearing Capacity</b>	0.5 MN/m <sup>2</sup>	TICO S will withstand very high dynamic and static loads without physical breakdown. In machinery mounting applications, the recommended max. static load should not be exceeded without consultation.

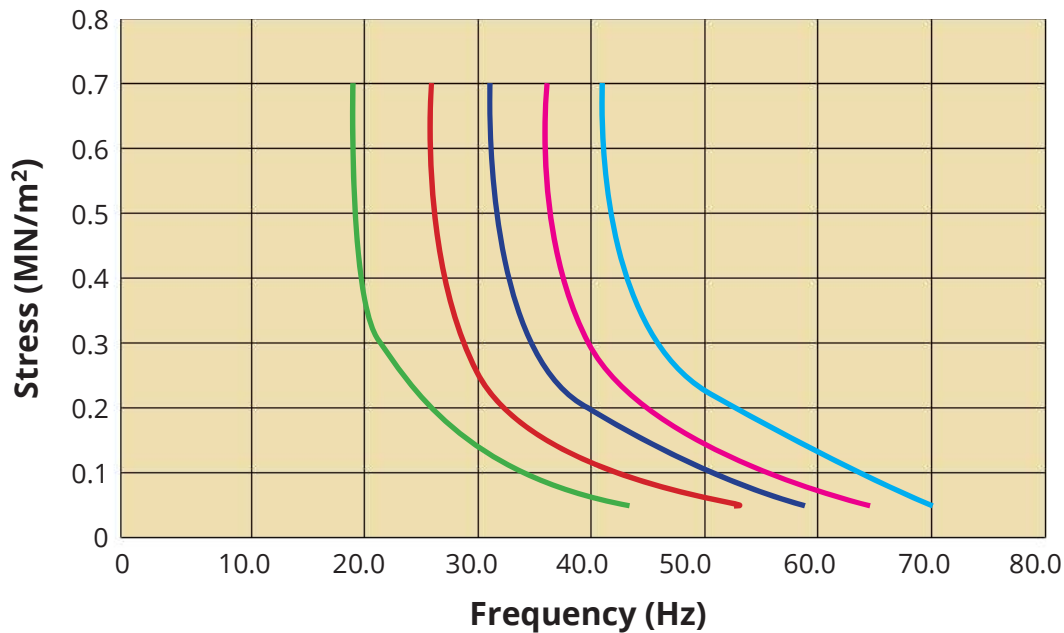
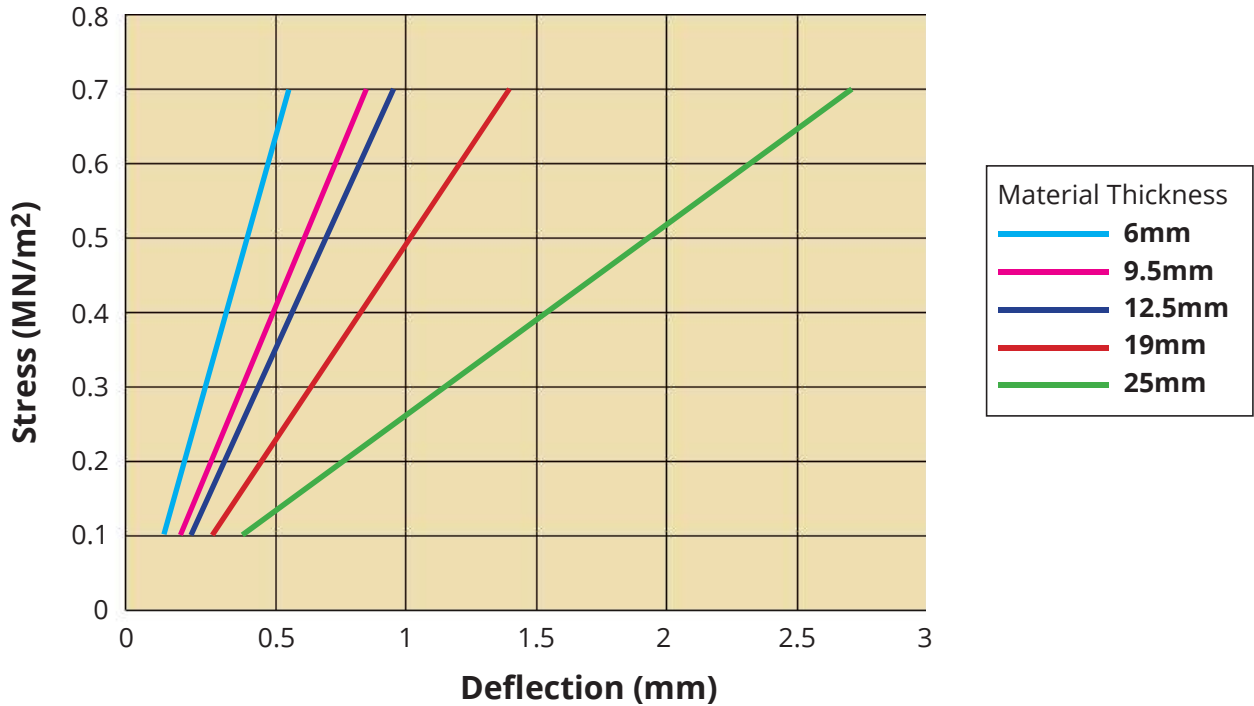
## SUPPLY DETAILS

<b>Code:</b> TICO S	<b>Product:</b> Cork/Elastomer Pad	<b>Standard Thicknesses (mm):</b> 6 9.5 12.5 19 25	<b>Standard Size (mm):</b> 1200 x 25 1200 x 50 1200 x 75 1200 x 100 1200 x 125 1200 x 150 1200 x 300 1200 x 600 1200 x 900 1200 x 1200
------------------------	---------------------------------------	---	--

Information in this document and otherwise supplied to users is based on our general experiences and is given in good faith but, because of particular factors which are outside our knowledge and control and affect the use of products, no warranty is given or implied with respect to such information. Specifications are subject to change without notice. Statements of operating limits quoted in this document are not an indication that these values can be simultaneously applied. A safe handling data sheet on this material is available on request.

# TICO S/PA

## GRAPHICAL DATA



Information in this document and otherwise supplied to users is based on our general experiences and is given in good faith but, because of particular factors which are outside our knowledge and control and affect the use of products, no warranty is given or implied with respect to such information. Specifications are subject to change without notice. Statements of operating limits quoted in this document are not an indication that these values can be simultaneously applied. A safe handling data sheet on this material is available on request.