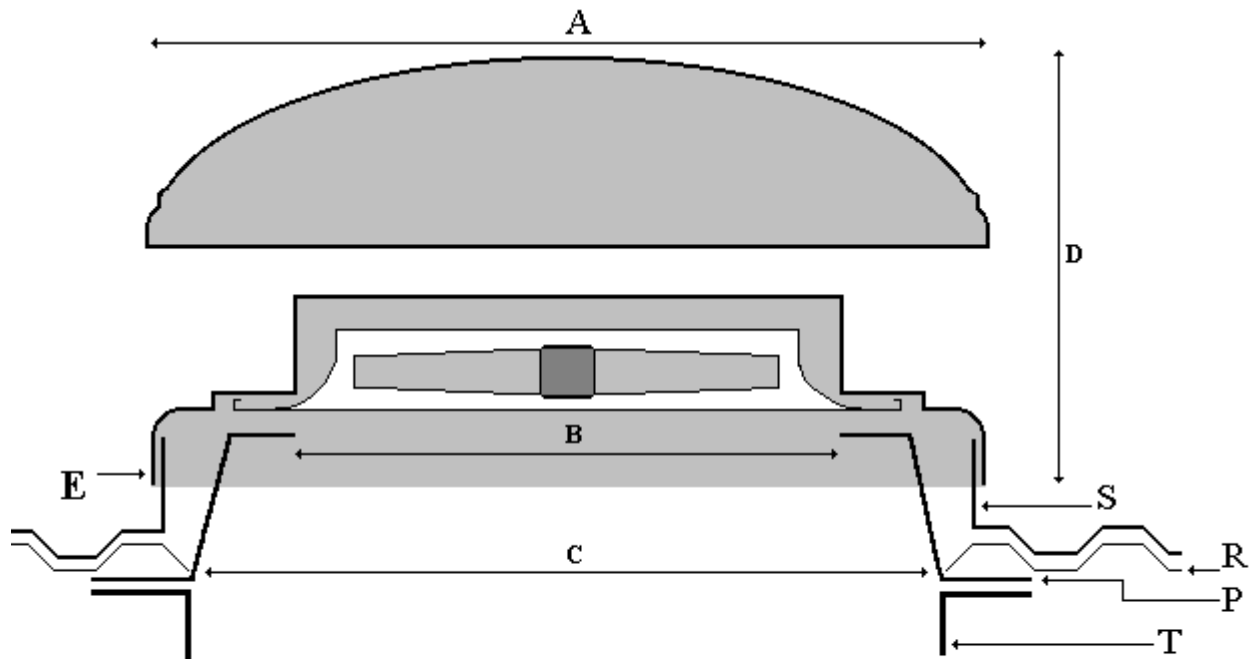


ducting express

Roof terminals

TERMINAL INSTALLATION DETAILS / DIMENSIONS TO SUIT STD UNINSULATED ROOF MOUNTING

Please Note: Purlin box – RSA Trim & Soaker sheet are not included



P= Purlin Box
R= Roof Profile
S= Soaker Sheet
T= RSA Trimmer

UNIT REF	A Weather Cowl sq	B Purlin box Aperture	C Purlin box base/ Roof aperture	D Unit height	E Weatherskirt Base sq	S Soaker sheet Kerb - Sq	Weight Kg **
RA200/250	490	310	480	270	460/490	440	3
RA315	555	350	515	340	520/555	510	4
RA350	675	400	680	380	660/695	640	6
RA400	765	510	780	460	755/795	750	10
RA450	765	510	780	460	755/795	750	10
RA500	995	620	910	550	920/960	890	13
RA560	995	620	910	550	920/960	890	13
RA630	1115	780	950	650	1010/1055	1000	18
RA710	1115	780	950	650	1010/1055	1000	18
RA800	1410	910	1150	750	1125/1170	1130	30
RA1000	1630	1140	1390	750	1365/1405	1365	40

*All dimensions indicated are nominal and subject to design change. The right to alter specification is reserved.

** Owing to the hand lay process, all weights are indicative and subject to variation.