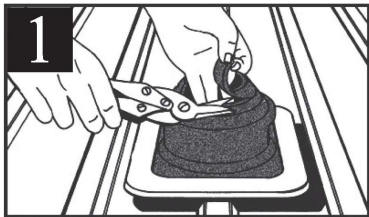


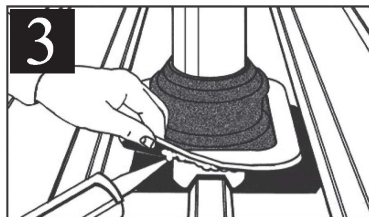
Dektite® installation instructions



1 Cut Dektite® cone where indicated for the relevant pipe size



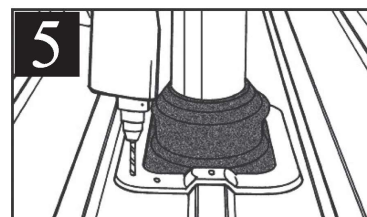
2 Slide Dektite® flashing down over pipe. Water can be used as a lubricant



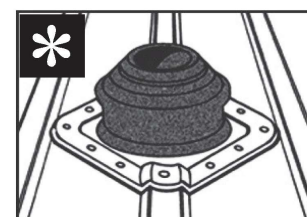
3 Apply neutral cure silicone sealant on underside of flange



4 Press pipe flashing into contours of roof panel



5 Fasten flashing to surface with self-tapping or self drilling screws; or selected pop rivets



* Use a Dektite® on the 'diamond' or bias for enlarged holes and penetrations on steep pitched roofs or deep contours

